

Foreign Direct Investment Strengthens **WISCONSIN'S ECONOMY**

HIGH-QUALITY JOBS

142,700 workers in Wisconsin are employed as a result of international investment.

MANUFACTURING

79,000 workers in Wisconsin - **55 percent** of all FDI jobs in the state - are in the **manufacturing sector**.

GLOBALLY CONNECTED

Among all international employers, those from the **United Kingdom, Canada** and **Germany** support the largest number of jobs in Wisconsin.

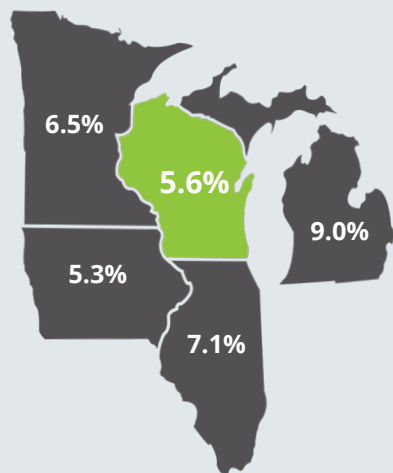
MANY EMPLOYERS

903 international employers have operations in Wisconsin.

INTERNATIONAL INVESTMENT CONTRIBUTES TO WISCONSIN'S ECONOMY

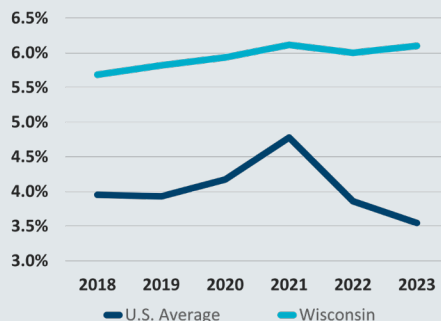
Wisconsin vs. Its Neighbors

FDI Jobs as a % of Total Employment



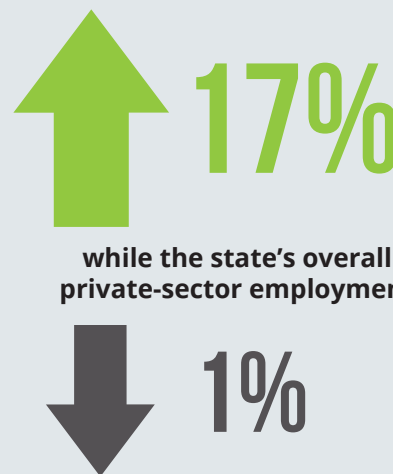
Wisconsin vs. USA

FDI Jobs as a % of Total Employment



Wisconsin trails the national average in its portion of jobs supported by international investment.

From 2018 to 2023, Wisconsin's FDI employment...



DISCOVER THE FULL LIST OF GBA MEMBERS

Over 200 international companies comprise GBA's membership, representing a slice of the U.S. economy that provides 8.7 million high-quality jobs that pay an average of seven percent higher compensation than the economy-wide average. Our members are some of the largest international employers in the country. Browse through our membership list using the QR code.

